



# 2011 NPA Grand National

## Pigeon Show



TOWN & COUNTRY GRAND HALL AND RESORT JAN. 6-8

### **The Show: What to expect**

To be honest, we expect a pretty big show. We started promoting January 2009 and we expect several hundred exhibitors around the country and 200 or more pigeon enthusiasts from Canada, Mexico, Europe, Asia and Middle East. Double that number for guests, and we plan to invite the local public. The last California National show held in 2006 had 7,5,00 pigeons exhibited, with around 200 NPA-registered breeds. We also have the NPA, the Los Angeles Pigeon Club, San Diego Metropolitan Pigeon Club, and the San Diego Visitors Bureau actively involved with its promotion and preparation, besides a host of other clubs, entities and publications. LAPC will also not have its annual Pageant of Pigeons show prior to the National, prompting more entries.

The show committee's biggest goal is to make this a first class, grand event for all participants. The beautiful Grand Hall, foyer and isles will be decorated, secure and comfortable. The meeting rooms are adjacent and we plan for a fantastic banquet with entertainment. We plan for several sponsors, prizes, great displays and a central show staging area for announcements and activities. We will arrange for sightseeing tours and provide free shuttle airport service<sup>1</sup> for exhibitors with their birds. We also expect to debut the first National online entry method, which will allow a few days extra to enter birds, or the traditional mail-in.

### **Room Registration**

This will take a partnership. To get this resort for almost the entire week, and to negotiate rates 50% lower than normal, we had to promise a minimum number of rooms. If you try to penny-pinch and stay at a motel somewhere else, you are not saving because of the rental/fare to travel to/fro, the amenities of the resort, the parking and food coupons, the free airport shuttle (with birds), and you also hurt chances of us doing this again. Go to the official web page to register your room early...you can do it online tonight! See reverse for registration/web information.

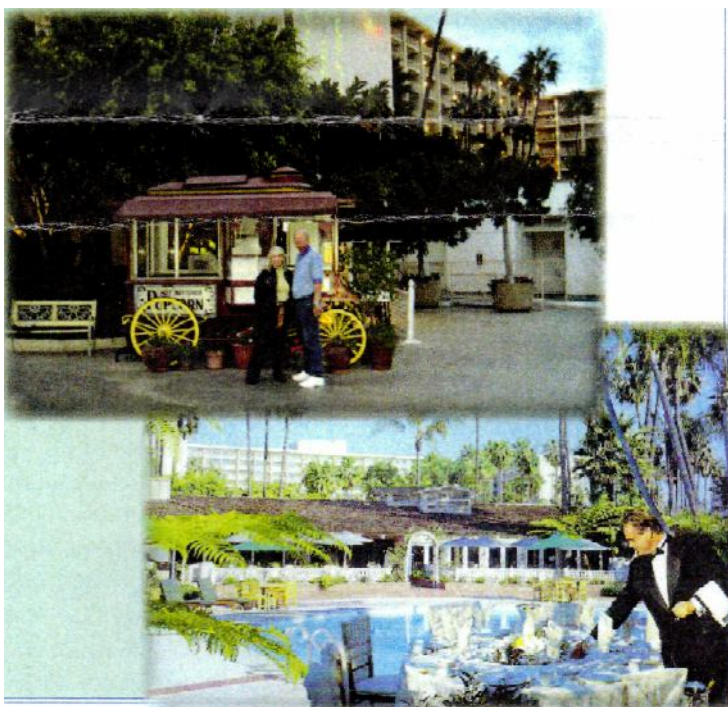
(<sup>1</sup> = Must be staying at T&C Resort for SDMPC-sponsored shuttle)

*Get Excited.  
It's Coming!*



### **This promises to be a San Diego grand event**

After 33 years, San Diego will host the 2011 NPA Grand National Pigeon Show, and its already one of the most anticipated and talked-about shows in years! It will be at the 32-acre, hawaiian-like resort with a new 41,000 sq.ft. Grand Hall, beautiful rooms, great amenities, fantastic weather all in one place. Another reason you, family and friends need to attend is that San Diego is a premier destination in January, and we recommend you treat it as a vacation. Enjoy the show, but also enjoy the attractions and stay longer if you're able. The Town & Country is centrally located in the heart of San Diego and only a few minutes from the airport and many attractions. The resort features five restaurants, three lounges, three pools, a day spa and salon, and over 5,000 palm trees, gardens and flowering plants. Guests will stay in charming garden rooms or tower rooms with balconies. You can just shuttle around...you really don't even need a rental vehicle. Fashion Valley—one of the most popular shopping malls—and the San Diego Trolley is adjacent to the resort.



# 2011 NPA Grand National Pigeon Show, San Diego

[www.pigeonpage.org/2011\\_NPA\\_National.htm](http://www.pigeonpage.org/2011_NPA_National.htm)

## Web Site and Room Registration

[www.pigeonpage.org/2011\\_NPA\\_National.htm](http://www.pigeonpage.org/2011_NPA_National.htm)

Click on *Registration Information* or call 888.231.4352 and register under "2011 Grand National Pigeon Show" Rate for Garden or Regency Tower rooms: \$119 per night (up to two in a room) or \$139 for Royal Palms Tower

Includes coupon for \$6 a day parking rate (non-guests \$16 a day) and \$2 off a day at resort restaurants. SDMPCC will provide exhibitors flying with pigeons staying at T&C with free shuttle to/from San Diego International Airport Wed. Jan. 5-Sun. Jan. 9 end at 12 p.m. All others use Super Shuttle service ([www.supershuttle.com](http://www.supershuttle.com)). Rate averages \$11 each way per person.

## Airport and Transportation

San Diego's primary airport, the San Diego International Airport on Harbor Blvd., is only 6 miles from T&C.

Delta and Continental Airlines provides Live Animal Cargo into San Diego as separate freight. It is less expensive to ship your pigeons air cargo and SDMPCC will arrange to pick up/return your birds at no cost during the allotted dates/times. If you travel with your birds, we will provide the same shuttle service if you stay at the T&C. Both airlines no longer require a health certificate; Delta changed its policy to include pigeons and only requires the owner to take the liability.

## Sightseeing and Tours

There are numerous tours and places to go in San Diego, especially from the Town & Country. We will arrange tours for the popular sites. We like to know what you are interested in, and indeed if you are interested! Send Larry Foos or Bob Nolan an email with your preference. S.D. Visitors Bureau is helping us.

Visit the San Diego Visitors Bureau, the Old Town Inland, stops at the hotel entrance everyday providing tours at reasonable rates. You can hop on/off all day as you tour around-  
Web: [www.pldtownsandiego.org](http://www.pldtownsandiego.org)

When you're ready to venture off from the resort, just stroll to the back parking lot. cross the S.D. river on a bridge, and you'll

Find a stop for the famous SDMTS trolley—an electric rail system that takes you to numerous locations, even to the Mexican border. That same walk takes you to the popular Fashion Mall. Also, across the street from the resort is the Riverwalk Golf course

Other popular sites include Sea World, San Diego Zoo and Wild Animal Park, Old Town San Diego, Gaslamp Quarter downtown, Balboa Park, Legoland, Coronado Island and beaches. Disneyland, Knott's Berry Farm, Universal Studios and Las Vegas are within short flight and driving distance

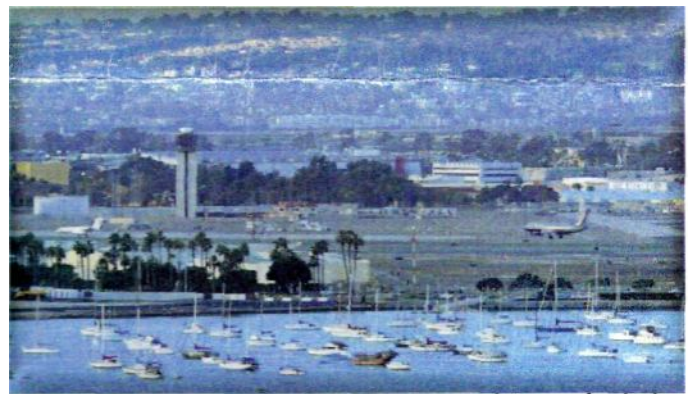
## Show Entry and Calendar

Entry fee is set at \$5-50 per bird

Web online entries will provide an extended entry deadline  
An entry form will be created and announced in NPA and Pure Bred magazine

### Calendar

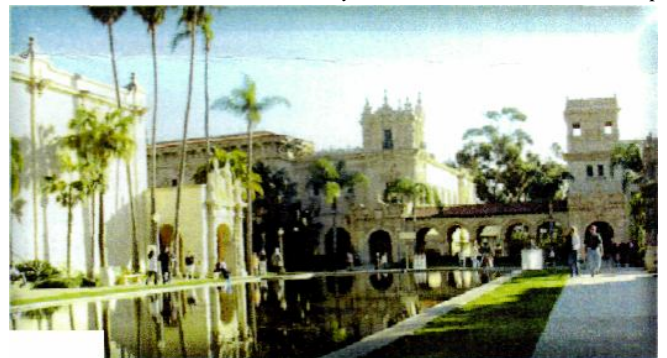
December 2010 (early):	Entry deadline TBD
Wednesday, January 5 noon:	doors open-checkin
Thursday-Saturday, January 6-8:	
Show commences Friday evening, January 7: Saturday, January 8, 3 p.m.:	Banquet/Entertainment Checkout



*San Diego International Airport by the bay*



*SDMTS Trolley at the downtown Same Fe Depot*



## Show Contact Information

Larry Foos, Secretary/Treasurer, 11023 Singletree Lane, Spring Valley, CA 91978; Phone: 619-741.2977; email: [larry.foos@cox.net](mailto:larry.foos@cox.net)

Robert 'Bob' Nolan, Co-Publicity Director, Phone: 949.493.0167; email: [robertnolan@cox.net](mailto:robertnolan@cox.net)

Clarence Legg, Show Superintendent/Logistics, Phone: 714.313.3647; email: [clarencelegg@att.net](mailto:clarencelegg@att.net)